

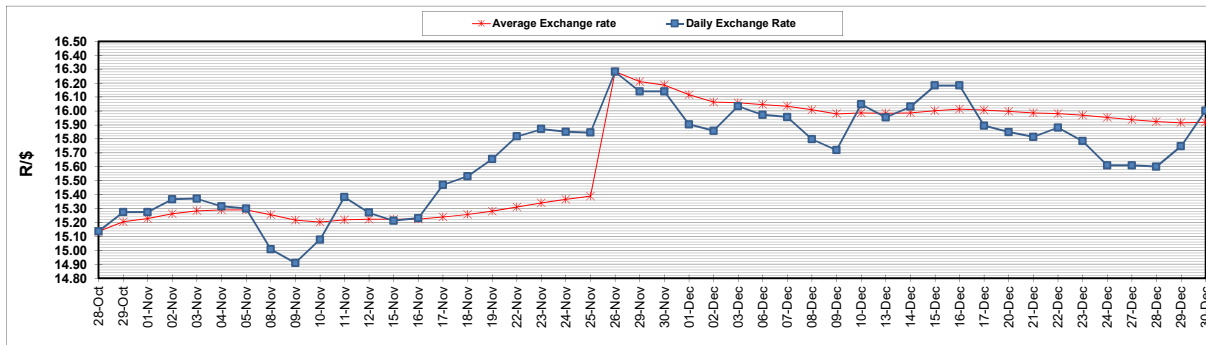
	PETROL 95 ULP	PETROL 93 ULP & LRP	DIESEL 0.05%	DIESEL 0.005%	ILL. PAR.
GAUTENG PUMP PRICE (SA c/l) AS FROM 01/12/2021	2,029.000	2,007.000	-	-	-
WHOLESALE PRICE (SA c/l) AS FROM 01/12/2021	-	-	1,792.480	1,797.880	1,167.688
SINGLE NATIONAL MAXIMUM RETAIL PRICE	-	-	-	-	1,489.000
BASIC FUEL PRICE - 30/12/2021 (SA c/l)	962.316	949.249	938.532	940.533	921.872
PRESS RELEASE CONTRIBUTION TO BFP 01/12/2021 - 30/12/2021 (SA c/l)	973.670	961.670	955.630	961.030	946.128
UNIT OVER/(UNDER) RECOVERY - 30/12/2021 (SA c/l)	11.354	12.421	17.098	20.497	24.256
AVERAGE BASIC FUEL PRICE 26/11/2021 - 30/12/2021	898.767	883.874	880.205	883.673	870.654
AVERAGE UNIT OVER/(UNDER) RECOVERY 26/11/2021 - 30/12/2021	70.516	73.409	70.865	72.557	71.394

### ANALYSIS MOVEMENT OF AVERAGE OVER/(UNDER) RECOVERY

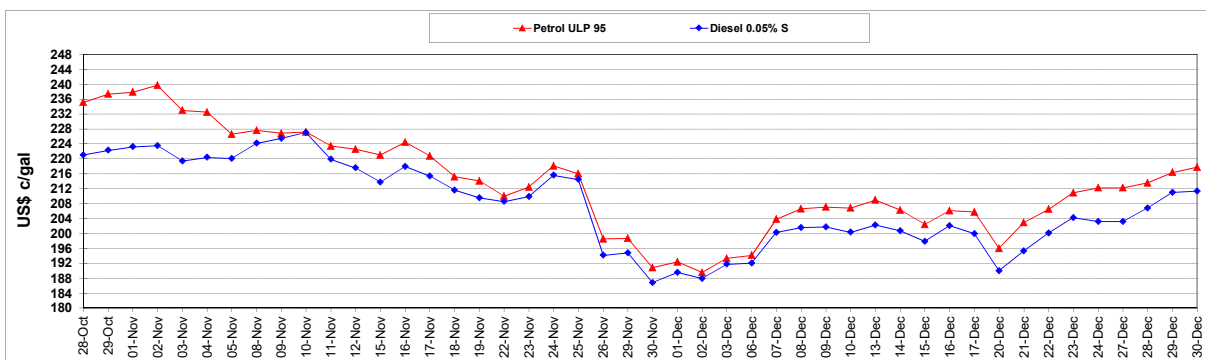
	PETROL 95	PETROL 93	DIESEL 0.05%	DIESEL 0.005%	ILL. PAR.
- MOVEMENT IN INTERNATIONAL PRODUCT PRICES	100.466	102.863	100.197	102.004	100.407
- MOVEMENT IN EXCHANGE RATE	(29.950)	(29.454)	(29.332)	(29.447)	(29.013)
AVERAGE UNIT OVER/(UNDER) RECOVERY 26/11/2021 - 30/12/2021	70.516	73.409	70.865	72.557	71.394

### R/\$ EXCHANGE RATE - (R/\$16.0015 - 30/12/2021)

#### EXCHANGE RATE USED IN BASIC FUEL PRICE



#### INTERNATIONAL PRODUCT PRICES OF BASKET USED IN BASIC FUEL PRICE



#### BASIC FUEL PRICE IN SA CENTS PER LITRE

